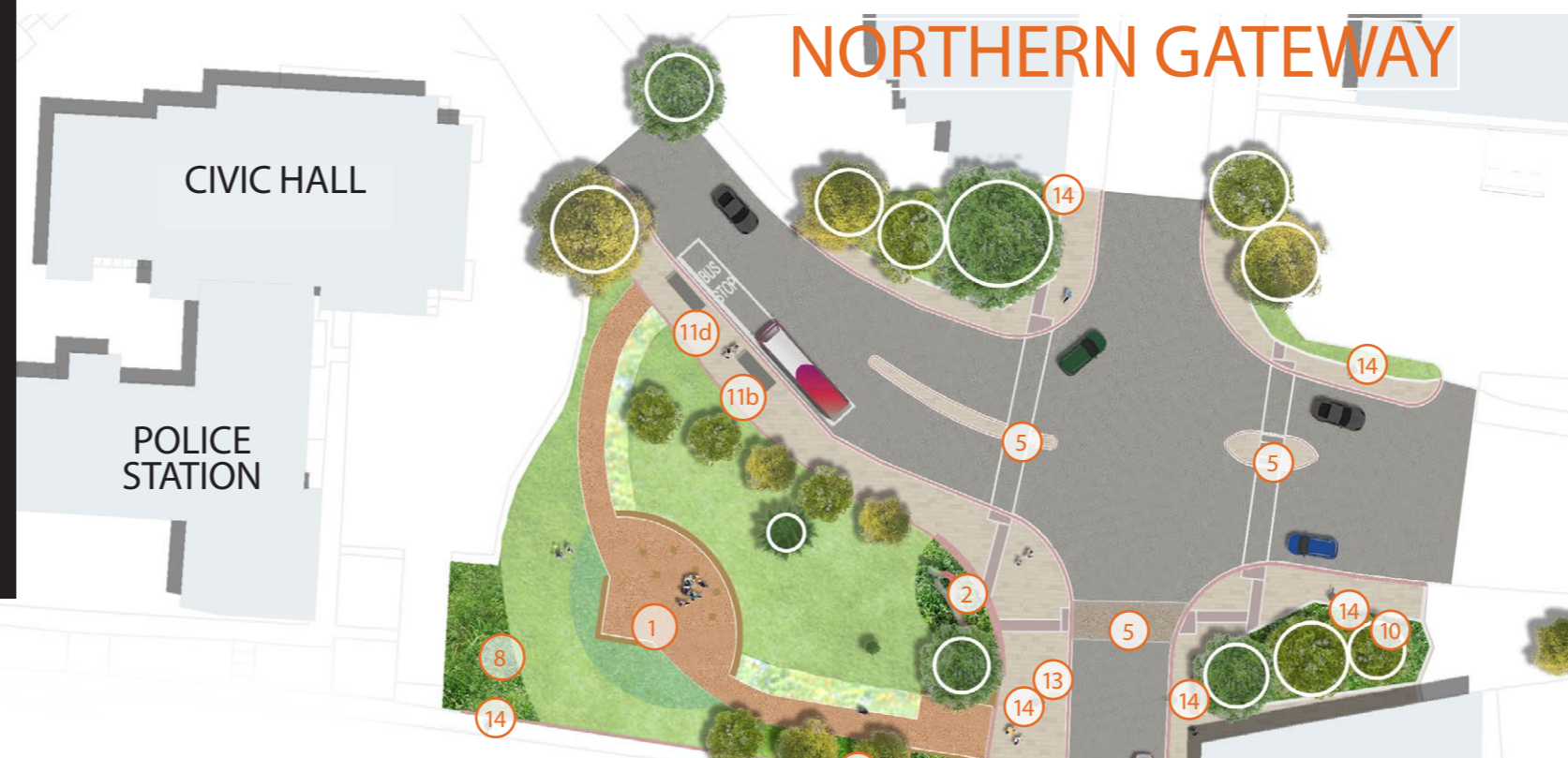


# Brierley Hill Town Centre Public Realm

## Illustrative Masterplan



**KEY**

- Existing Tree to be retained
- Proposed Trees
- High Street to be reduced to a 20mph speed limit, carriageway to be black tarmac

- Proposed Public Open Space
- Brier Rose Sculpture & Paving Integrated Public Art
- Church Access
- Raised Crossing Point, with buff coloured surface treatment to match the paving
- Controlled Crossing Point
- On-Street Car Parking
- Disabled Car Parking
- Proposed Low Level Planting
- Proposed Raised Planters
- Proposed Seating Area
- Bus Shelter (a - new, b - retained & upgraded, c - upgraded & relocated, d - retained)
- Public Car Park
- Proposed Bike Racks
- Street Lights to be Retained & Redecorated
- Proposed CCTV Camera
- Locally Listed Drinking Fountain
- Proposed Loading Bay
- Replacement Boundary Treatment to Existing Car Parks

### STREET FURNITURE PROPOSAL

The positions of the street furniture and planters are for guidance only and may be subject to change once works commence on-site.



**CYCLE STAND**  
 The distinctive cycle stand is contemporary in design, and of robust construction to withstand the rigours of frequent use.



**PUBLIC BIKE PUMP**  
 The Bike Pump is a heavy duty product designed to be installed anywhere giving cyclists a free facility to pump up deflated tyres.



**STEEL LITTER BIN**  
 Traditional heavy-duty classic square cast iron litter bin with 115 litre capacity in black and silver.



**TIMBER BOLLARD**  
 Timber bollard with ornate metal sleeve.



**STEEL PLANTERS - BLACK & SILVER FINISH**



**DOUBLE BENCH**  
 A bespoke double bench in a linear style, made from solid timbers with steel supports. A mixture of benches with backrests and those without, as seen above.

### HARD MATERIALS PALETTE



**YORKSTONE FLAG**  
 to the pavements



**RED GRANITE KERB**  
 to pavement edge



**YORKSTONE SETTS**  
 to parking bays with grey slate for demarcation lines



**YORKSTONE BLISTER PAVING**  
 for uncontrolled crossing points



**RED BLISTER PAVING**  
 for controlled crossing points



**RAILING**  
 Replacement boundary treatment to existing car park

### PRECEDENT IMAGES



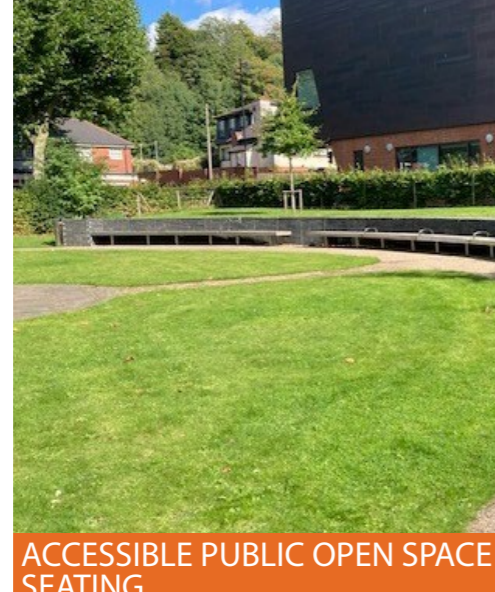
**BESPOKE LIGHTING COLUMNS RESTORED**



**HISTORICAL PHOTO OF HIGH STREET**



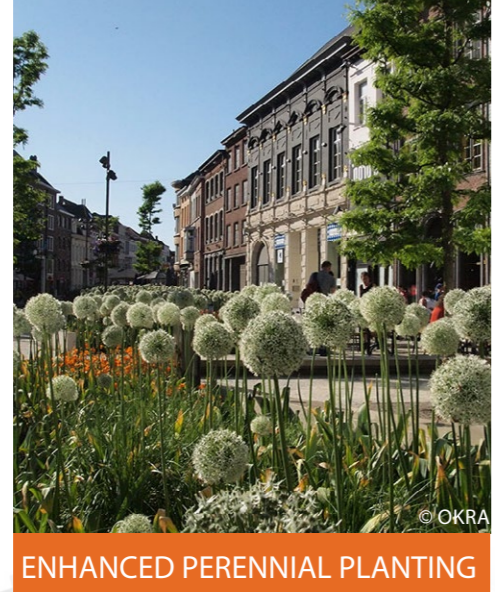
**PROPOSED STREET TREE**



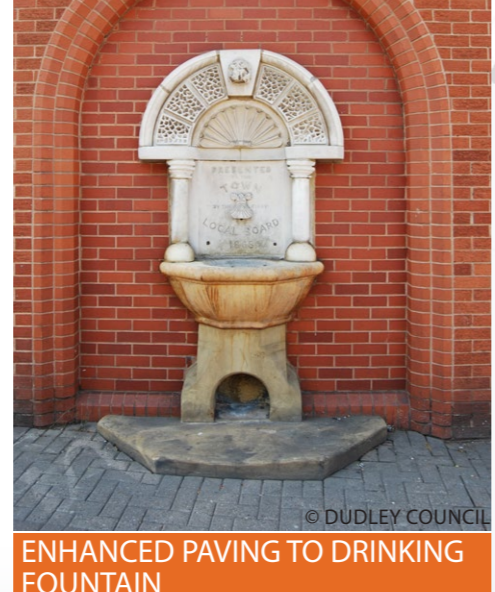
**ACCESSIBLE PUBLIC OPEN SPACE OUTSIDE CIVIC HALL WITH SEATING**



**PARKING BAY**



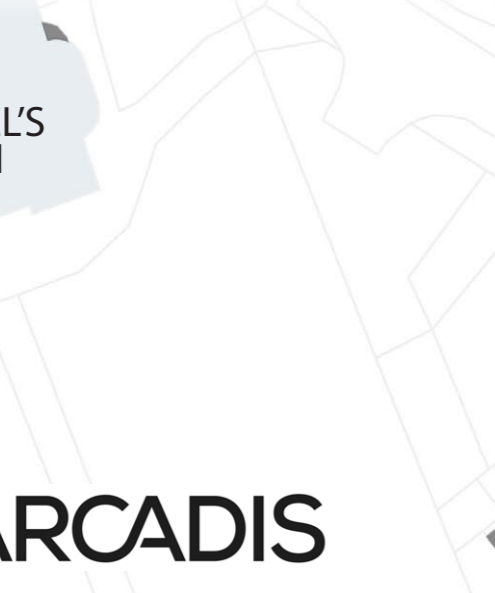
**ENHANCED PERENNIAL PLANTING**



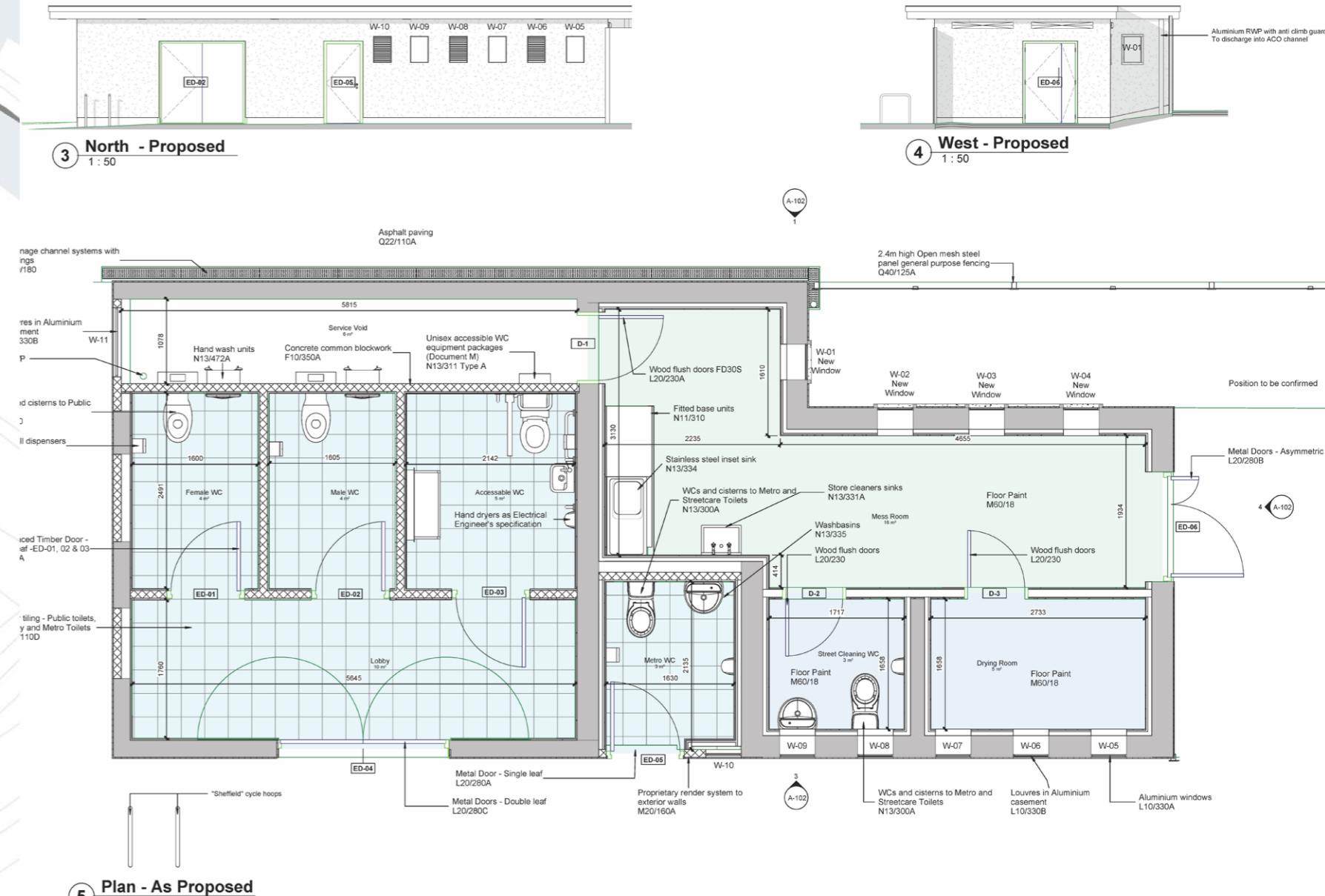
**ENHANCED PAVING TO DRINKING FOUNTAIN**



**ST MICHAEL'S CHURCH**



**ST MARY'S RC CHURCH**



## A. NORTHERN GATEWAY



### DESIGN FEATURES

1. Brier Rose Art Piece & Integrated Paving Artwork  
Rose art piece to be incorporated as a main feature of Civic POS design with text artwork in granite kerb
2. New accessible Public Open Space (POS) linked to Civic Hall  
Opportunity for outdoor performances/ events in the new Civic space
3. Amenity Grass

4. New Street Trees, subject to line of vision for CCTV
5. Herbaceous Ground Planting
6. Existing Street Lamp to be Retained & Redecorated
7. Footpath
8. Seating Area with Interval Gaps for Wheelchairs
9. Bins
10. Benches
11. Cycle Stand
12. Pictorial Meadow Planting

### PRECEDENT



## B. PEDESTRIAN PRIORITY: MOVEMENT AND CIRCULATION

B.1



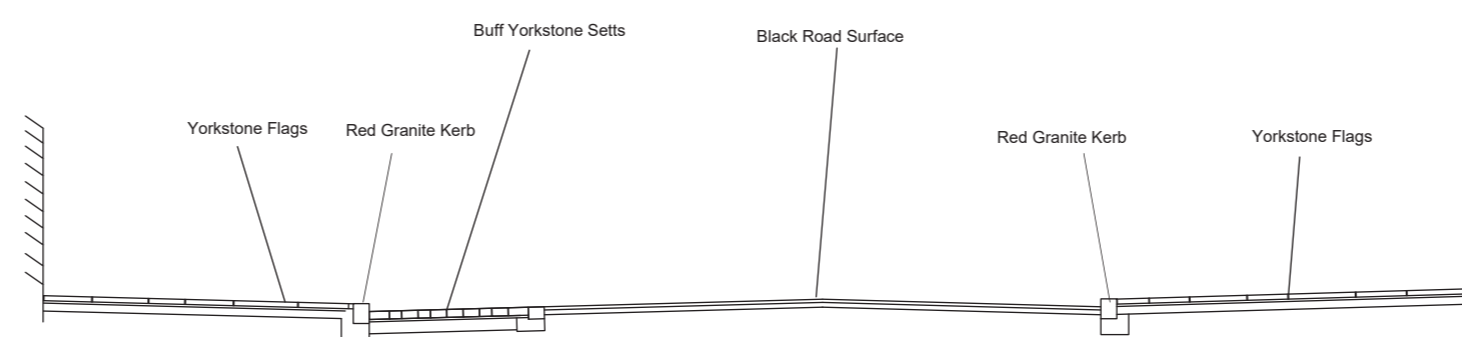
### DESIGN FEATURES

1. Raised Crossing Prioritising pedestrian movement across the high street through implementation of traffic calming measures - Crossing to be Relocated to Align with Link Space.
2. Cottage Street  
The proposals seek to keep Cottage Street open to traffic however provide more priority to pedestrians with the introduction of a raised crossing point.
3. Raised Planters
4. Benches
5. Bins
6. Existing Street Lamp to be Retained & Redecorated

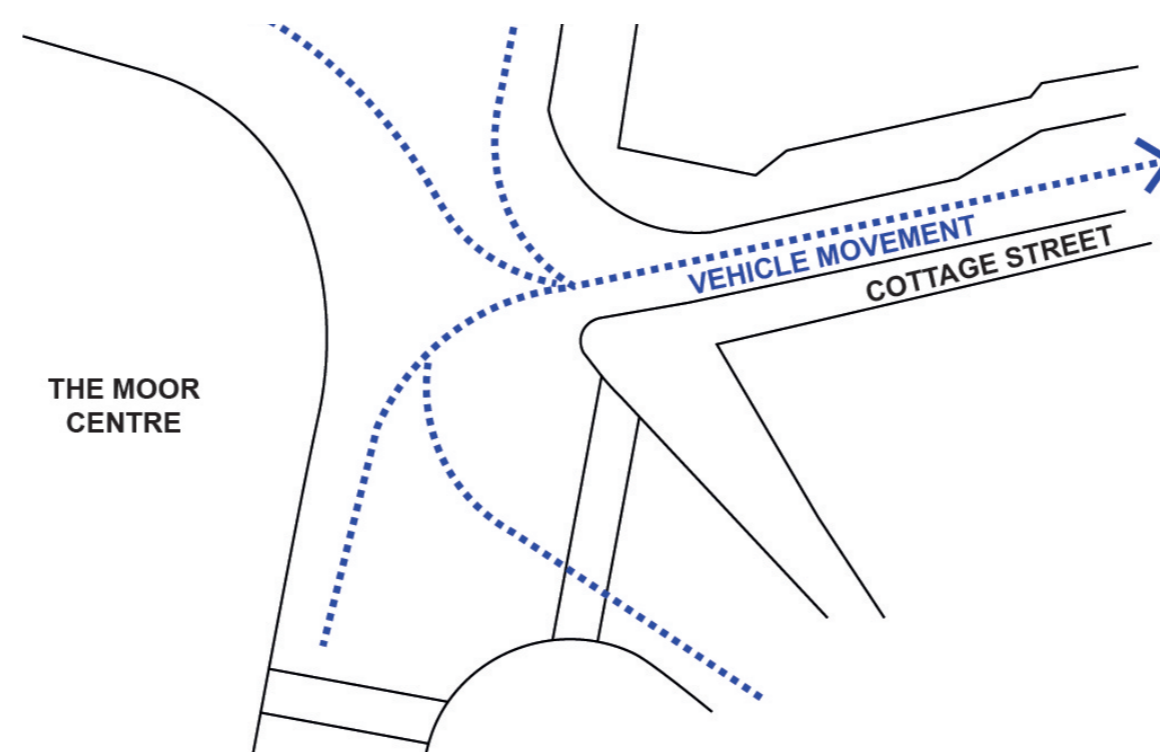
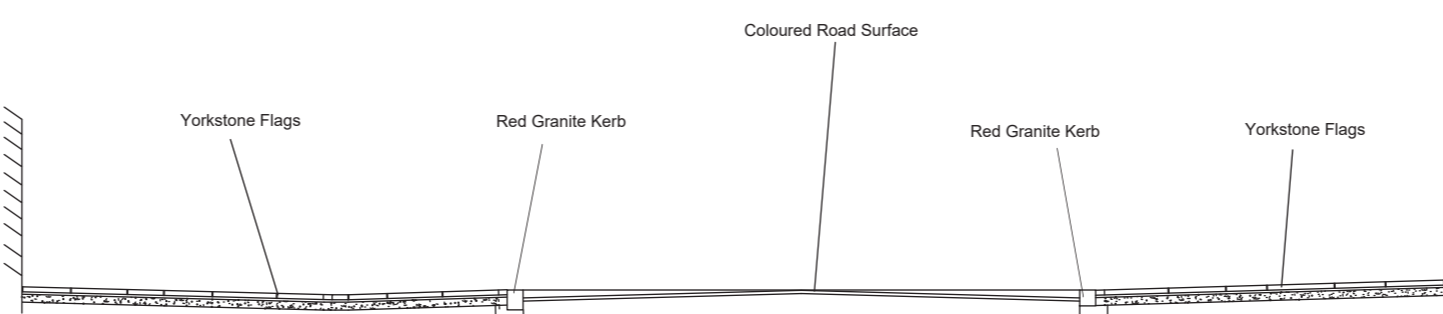
B.2



### TYPICAL SECTION THROUGH PARKING BAYS



### TYPICAL SECTION THROUGH RAISED PEDESTRIAN CROSSING



## KEY PLAN



## C. SOUTHERN GATEWAY



### DESIGN FEATURES

1. Enhanced Perimeter Around Public Car Park
2. Proposed Verge Planting
3. Raised Planters
4. Benches
5. Bins
6. Seating Area
7. Existing Street Lamp to be Retained & Redecorated
8. Increased width of pavement in-front of St Mary's Church

### VERGE PLANTING PRECEDENT



# EXISTING SITE AND SERVICES

Topographical Abbreviations			
BH	Borehole	MKR	Marker
BOL	Bollard	MT	Mercury Telecom Cover
BT	British Telecom Cover	OHC	Overhead Cable
CATV	Cable TV Cover	OHP	Overhead Pipe
CCTV	Closed Circuit TV	PB	Post Box
CL	Cover Level	RE	Rodding Eye
CM	Cable Marker	RG	Road Gully
DP	Down Pipe	RS	Road Sign
EJB	Electricity Junction Box	RWP	Rain Water Pipe
EC	Electricity Cover	SC	Stop Cock
EP	Electricity Pole	STA	Traverse Station
ER	Earthing Rod	SV	Stop Valve
FH	Fire Hydrant	SVP	Soil Vent Pipe
G	Gully	TB	Telephone Box
GV	Gas Valve	TJB	Telephone Junction Box
IC	Inspection Cover	TPT	Trial Pit
KO	Kerb Outlet	TL	Traffic Light
LS	Litterbin	TP	Telephone Pole
LC	Lamp Column	VP	Vent Pipe
LP	Lamp Post	WM	Water Meter
MN	Manhole	WV	Water Valve

Underground Services Abbreviations			
A	Approximate	IL	Invert Level
AC	Asbestos Cement	INT	Interceptor
BD	Back Drop	NVD	No Visible Ducts
BL	Base Level	NVP	No Visible Pipes
BR	Brick	NVE	No Visible Exit
CI	Cast Iron	OF	Offset Fill Point
CO	Concrete	OSA	Outside Survey Area
CP	Catch Pit	PE	Polyethylene Pipe
CPL	Catch Pit Base Level	PVC	Polyvinyl Chloride Composite
CR	Cable Riser	PR	Pipe Riser
d	Depth to Service (in metres)	PS	Pea Signal
DI	Ductile Iron	PT	Pea Trap
ED	Empty Duct	RM	Rising Main
EOT	End of Trace	SA	Soakaway
GPR	Ground Penetrating Radar	SN	Swan Neck
GRP	Glass Reinforced Plastic	SI	Spun (Grey) Iron
GR	Gas Riser	SL	Silt Level
HV	High Voltage	SS	Stainless Steel
HDPE	High Pressure Polyethylene	Tank	Tank
		UTF	Unable to Find
		UTGA	Unable to Gain Access
		UTL	Unable to Lift
		UTR	Unable to Rod
		UTS	Unable to Survey
		UTT	Unable to Trace
		VC	Vitrified Clay
		VR	Vapour Recovery
		WL	Water Level
		WR	Water Riser

Legend	
	Chamber Extents
	Unknown Chamber Extents
	Radar Area Anomaly
	Cable TV
	Communications
	Compressed Air
	Drainage - Combined
	Drainage - Foul
	Drainage - Surface
	Ducting
	Ducting - Empty
	Earth Cable
	Electric
	Electric - HV
	Fuel Pipe
	Gas
	Fuel Gauge Line
	Heating Pipe
	LPG
	Offset Fill Pipe
	Oil Pipe
	Radar Trace
	Survey Boundary
	Telecoms
	Traffic Control
	Trench Scar
	Unidentified
	Vapour Recovery
	Vent Pipe
	Water
	End Of Trace

**PAS 128:2014 Quality & Confidence Levels**

(A) Horizontal and vertical position verified visually (Accuracy: Horizontal (±50 mm) Vertical (±25 mm))

(B1) Horizontal and vertical location of the utility detected by multiple geophysical techniques used. (Estimated accuracy: ±150 mm or ±15% of detected depth whichever is greater).

(B2) Horizontal and vertical location of the utility detected by one of the geophysical techniques used. (Estimated accuracy: ±250 mm or ±40% of detected depth whichever is greater).

(B3) Horizontal location only of the utility detected by one of the geophysical techniques used. (Estimated accuracy: Horizontal (±500 mm) Vertical - Undefined)

(B4) A utility segment which is suspected to exist but has not been detected and is therefore shown as an assumed route. (Estimated accuracy: Undefined)

(C) Route transcribed from utility asset plans and correlated to visual indicators and surface features. (Estimated accuracy: Undefined)

(D) Route transcribed from utility asset plans (Estimated accuracy: Undefined)

NB: 'P' suffixed to the quality level indicates GPR data has been post-processed. QL(A) is inferred at all MH's & IC's unless otherwise stated.

