



Stourbridge Town Centre Plans



A chance for you to tell us what you think about our ideas to make Stourbridge Town centre better.

If you need any support with this or need it in a different way, please call Dudley Council on 01384 813400 or email L2L@dudley.gov.uk

Stourbridge Town Centre



Dudley Council has been doing an assessment of the town centre. They want to make the town better and have more pedestrian and cycle paths in the town.



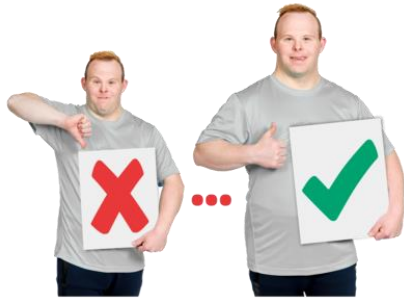
The council has got 3 million pounds from the West Midlands City Regions Sustainable Transport Settlement.



We have to write a business case for the West Midlands Combined Authority. There are 3 things we will be including they are

- Gateways
- Streets
- Spaces

The business plan



Gateways

This will make the town more welcoming when people visit. There are ways we can improve connections across the ring road.



Streets

The pedestrian and cycle experience could be improved to create a better connected town centre.



Spaces

Stourbridge has good outdoor spaces which support many different experiences. They need to be updated.

Our Goals



A welcoming and inclusive community.



Safe crossings for people when they are coming into and leaving the town.



An environment that supports people and responds to climate change.



An attractive place for people to visit.



More money into the town for local people and businesses.

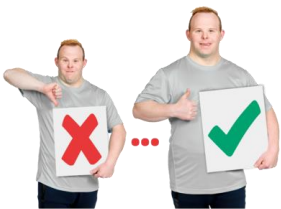
Our Proposals – What we want to do.



Improve the six main ways into the town. These are called gateways.



Better streets in the town with new pedestrian crossing points.



Improve the cycling network through the town centre.



Make the 20 miles per hour zone in the High Street. And more blue badge parking.



Plant new trees, plants and flowers to help reduce pollution.



Make public spaces more inviting and encourage better pedestrian access.

Accessible



What do you think?

You can fill in the survey.

.

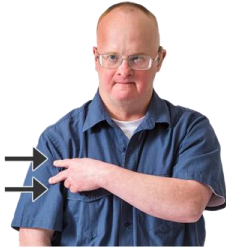


Go to

www.regeneratingdudley.org.uk/Stour-bridge-consultation



You can take your survey at Stourbridge Library from Wednesday 17th January to Wednesday 14th February 2024.



You can find out more from our staff on the following dates.



Wednesday 24th January 2024 10am to 1pm



Tuesday 30th January 2024 1pm to 4pm



Saturday 3rd February 2024 10am to 1pm



Thursday 8th February 2024 1pm to 4pm