

# Introducing the exciting next phase of development for the Castle Hill area

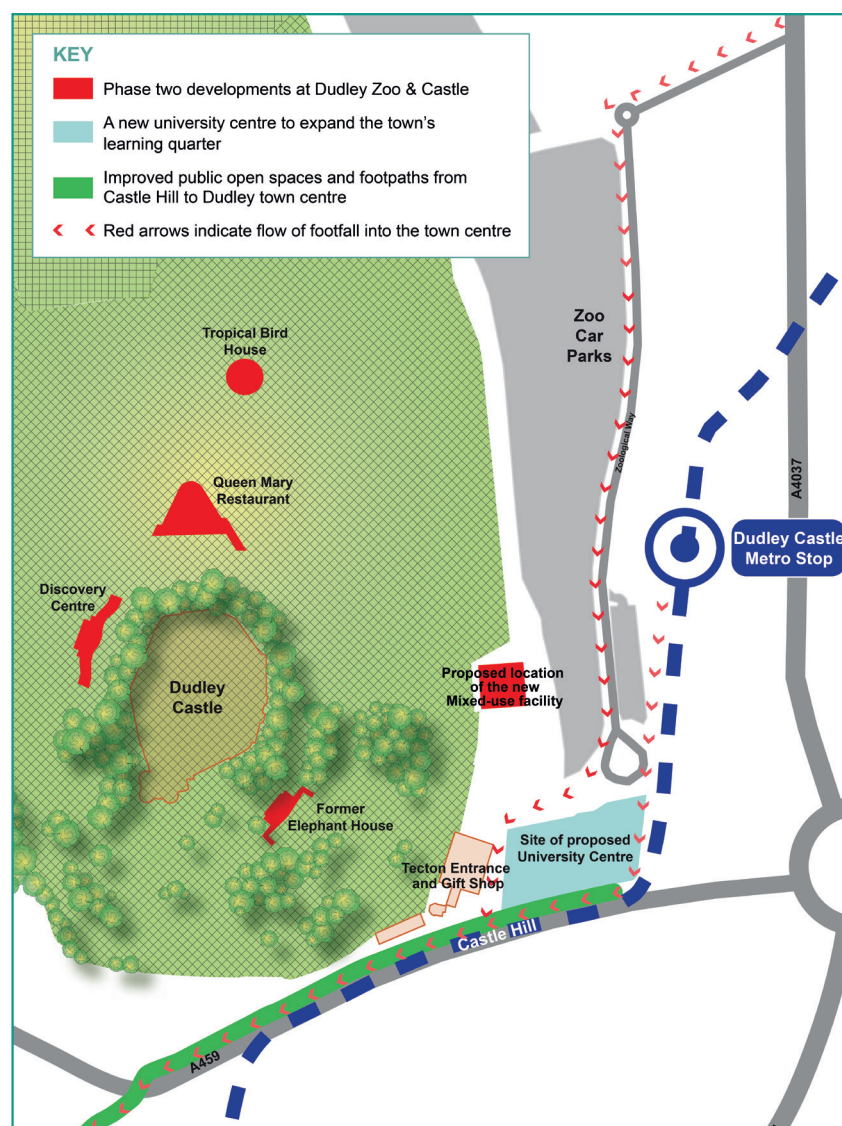
A short summary that will provide useful information that will assist you in completing the questionnaire enclosed. Please read before answering the questions.

**Please note:** you can complete the questionnaire online at [www.regeneratingdudley.org.uk](http://www.regeneratingdudley.org.uk) where you will find more images and a short video.

This summary is made up of three key areas, which focus on the main elements of the next phase of development for Castle Hill; these being:

- Phase two developments at Dudley Zoo & Castle (red)
- A new university centre to expand the town's learning quarter (blue)
- Improved public open spaces and footpaths from Castle Hill to Dudley town centre (green)

This map identifies the three key areas.



## Phase two developments at Dudley Zoo & Castle

A lot of brilliant work continues at Dudley Zoo & Castle, which now includes a recent grant of £120,000 received from the Getty Foundation to carry out essential repairs at four of the site's iconic Tecton structures.

This next phase of development includes the full refurbishment of four Tecton structures and a new mixed-use facility.

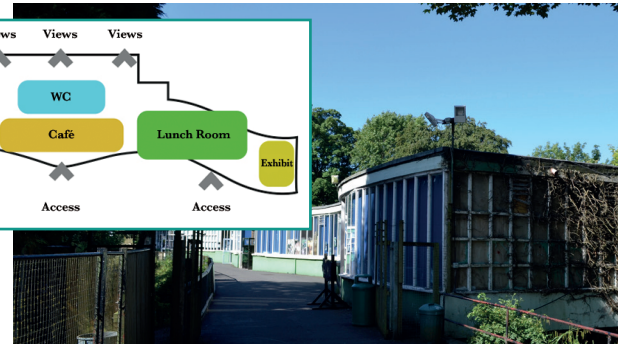
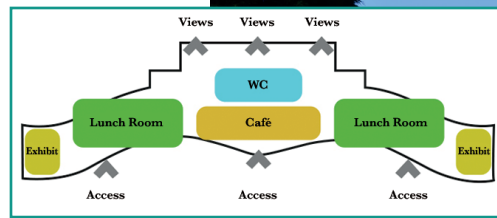
Phase one developments included a new zoo entrance, a new access road off Tipton Road and the expansion of the existing car park.

## Four Tecton structures

The four Tecton structures are the Discovery Centre, Elephant House, Queen Mary Ballroom and the Tropical Bird House.

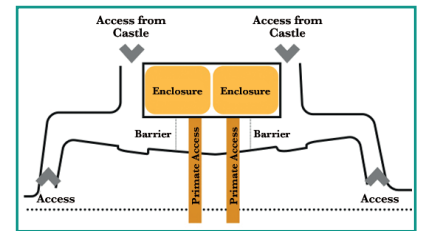
## Discovery Centre

The proposal for the Discovery Centre is to reinstate this space as a covered catering and eating facility with small animal exhibits at both ends. A viewing gallery into the enclosures will also be created.



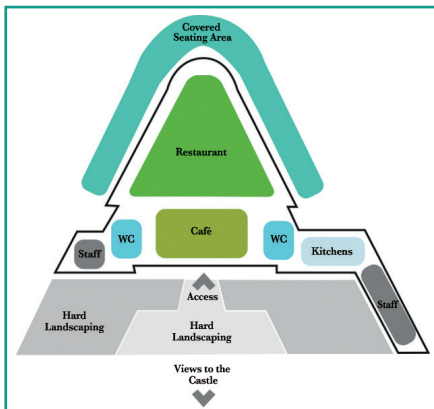
## Elephant House

The plan for the former Elephant House is to adapt the building into an enclosure for primates, becoming an extension to the macaque enclosure currently on the bank, adjacent to the chairlift. The proposal allows the macaques access into the enclosure through high level walkways from the hillside into the second level of the elephant house, allowing visitors to watch from beneath within the courtyard and alongside the walkways on the upper terrace.



## Queen Mary Ballroom

It is proposed that the Queen Mary maintains its function as a restaurant and café but that it extends outside.

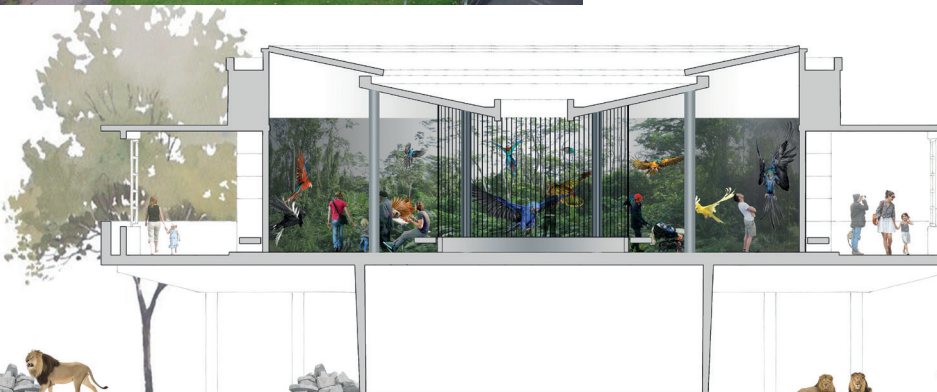
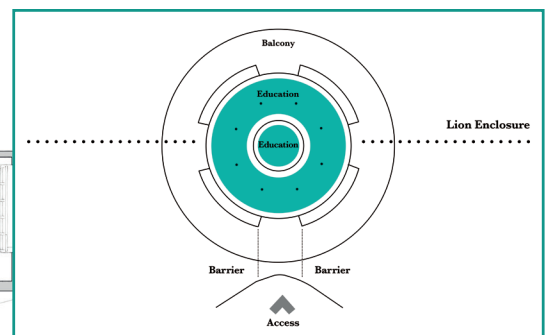


This can be achieved by extending the seating capacity to the external spaces, providing covered seating areas for visitors to use throughout the year, this is proposed using canopies to the rear and front of the building. The proposal seeks to manage the tree line to allow better lines of sight across the zoo and the woodland beyond.



## Tropical Bird House

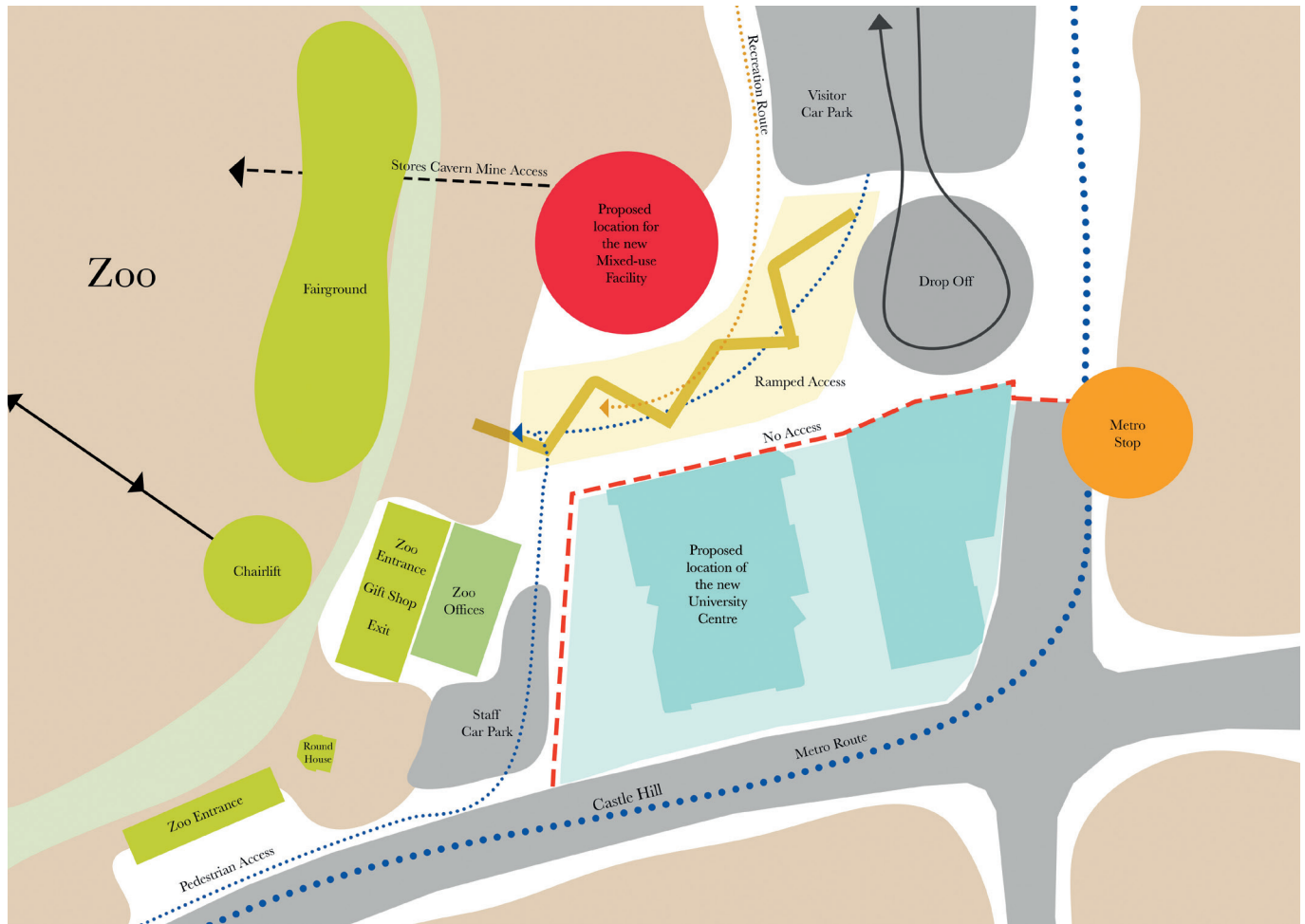
The Bird House has been recognised as very significant and an architecturally distinguished piece. The building is now within the grounds of the lion enclosure and no longer open to the public. The proposal aims to re-purpose the space providing an educational facility that uses digital media to explain the history of Dudley Castle, for example.





## New mixed-use facility

This building is perhaps the most important building as it will provide a link from the zoo's entrance and act as a 'hub' for interpretation and archaeological information. The intention is to use it for activities, training and education, meetings and conferences.



## A new university centre to expand the town's learning quarter

Dudley Town's Fund Board is seeking funding from central government and other local and regional sources to develop a new university style centre offering opportunities to grow skills, jobs and the local economy.

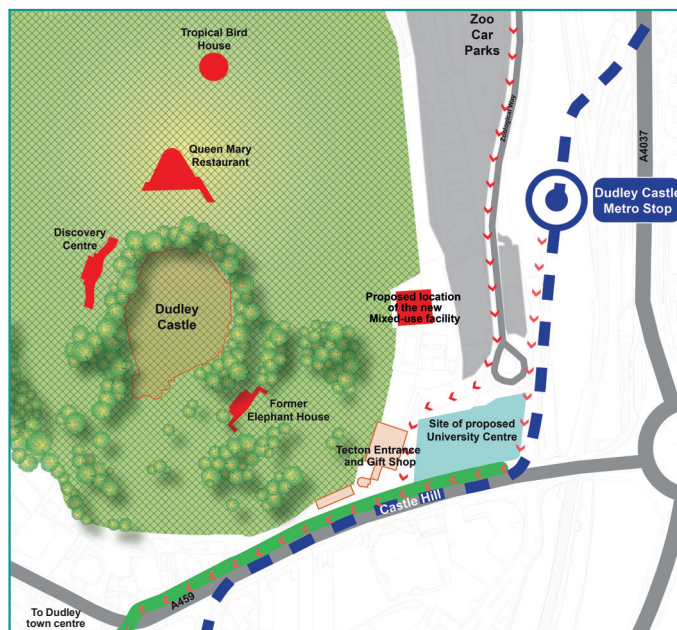
We all recognise that town centres need to function differently and be prepared to adapt if they are to survive and indeed thrive in the future. Our market research and work with Dudley NHS Foundation Trust for example indicates strong future demand for a university centre offering courses in health and life sciences in the first instance, with technical programmes delivered at level 4 and 5 alongside foundation, apprenticeship degrees, undergraduate and post graduate qualifications starting in the academic year 2023/24 onwards.

One of the main aims of this project is to ensure that the skills training and qualifications are designed to meet the needs of local employers, and that local people are able to access this provision and compete for local jobs. Ensuring that we as a borough focus on our 'home-grown' talent and provide local people with the means to progress into higher education and degree led employment. There is also potential for the centre to house other health care professionals and facilities for community use.

This new facility will sit alongside the Black Country & Marches Institute of Technology, off Tipton Road, which will open in autumn 2021 offering higher level qualifications in advanced manufacturing, modern construction methodologies and medical engineering.

Together these two buildings will create a university park in the town nearby to existing sites belonging to Dudley College of Technology - thereby expanding the town's learning quarter. We plan to locate the new campus on the site of the former hippodrome building.

We expect the new health and life sciences centre will bring in 1,000 students each year, boosting the local economy, strengthening links and activity between Castle Hill and the town centre as well as vastly improving this important gateway into the town.



## Improved public open spaces and footpaths from Castle Hill to Dudley town centre

A funding pot of £1 million via the Towns Fund has already been secured which will significantly improve the physical link between Castle Hill and Dudley town centre. Improving the physical link will encourage a significant amount of people into the town centre (as indicated by red arrows).

It will also link the two metro stops at Castle Hill and Dudley town centre.

## In summary

All of what we have shared demonstrates the importance of this next stage of development for the Castle Hill area. By bringing key buildings and developments forward, as well as enhancing public/open spaces and footpaths, it is hoped that new visitors, residents and businesses will be attracted to the area. Add this to the continued successes and planned expansion of Dudley Town Hall, Dudley town centre offers a complete package - leading to a vibrant town centre, growth of the local economy and the creation of job opportunities for local people.

We would be grateful if you would now take an extra few minutes to complete the short questionnaire. **The closing date for replies is Wednesday 16 December 2020.**

**Remember:** you can complete the questionnaire online at [www.regeneratingdudley.org.uk](http://www.regeneratingdudley.org.uk)

We will be speaking to you about more regeneration projects for the town in the coming months, some of which include the redevelopment of heritage buildings, exciting proposals for shopping centres and improvements to more public and open spaces.

**This is a communication from Dudley Council and Dudley Towns Fund Board.**